

SNS-OR-USA

INSTRUCTION MANUAL



TRADEWEST

S U P E R

OFFROAD™



MICKEY THOMPSON
STADIUM
OFF-ROAD RACING SERIES

SUPER NINTENDO
ENTERTAINMENT SYSTEM

START YOUR ENGINES

Thank you for purchasing Super Off-Road from Tradewest for your Super Nintendo Entertainment System. For maximum enjoyment, please read this Instruction Manual thoroughly before playing.

WARNING:
PLEASE READ THE ENCLOSED CONSUMER
INFORMATION & PRECAUTIONS BOOKLET
CAREFULLY BEFORE USING YOUR NINTENDO®
HARDWARE SYSTEM OR GAME PAK.



LICENSED BY



NINTENDO, SUPER NINTENDO
ENTERTAINMENT SYSTEM
AND THE OFFICIAL SEALS ARE
REGISTERED TRADEMARKS OF
NINTENDO OF AMERICA INC.
© 1991 NINTENDO OF AMERICA INC.

THIS OFFICIAL SEAL IS YOUR
ASSURANCE THAT NINTENDO HAS
APPROVED THE QUALITY OF THIS
PRODUCT. ALWAYS LOOK FOR THIS
SEAL WHEN BUYING GAMES AND
ACCESSORIES TO ENSURE COMPLETE
COMPATIBILITY WITH YOUR SUPER
NINTENDO ENTERTAINMENT SYSTEM.
ALL NINTENDO PRODUCTS ARE
LICENSED BY SALE FOR USE ONLY
WITH OTHER AUTHORIZED PRODUCTS
BEARING THE OFFICIAL NINTENDO
SEAL OF QUALITY.

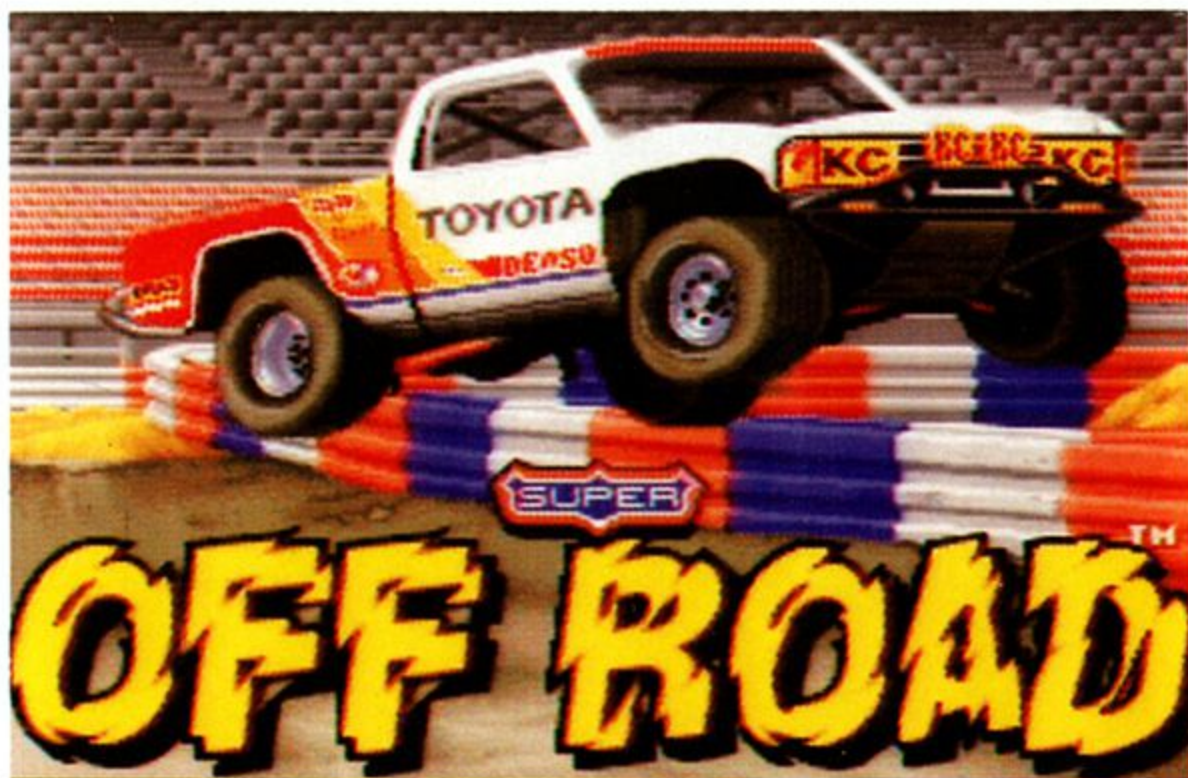
CONTENTS

Tear Up The Road!	2
Using The Controller	3
The Scoreboard	4
Getting Ready to Race	5
Winning Prize Money	9
The Speed Shop	10
Hot Tips	12
Limited Warranty	13

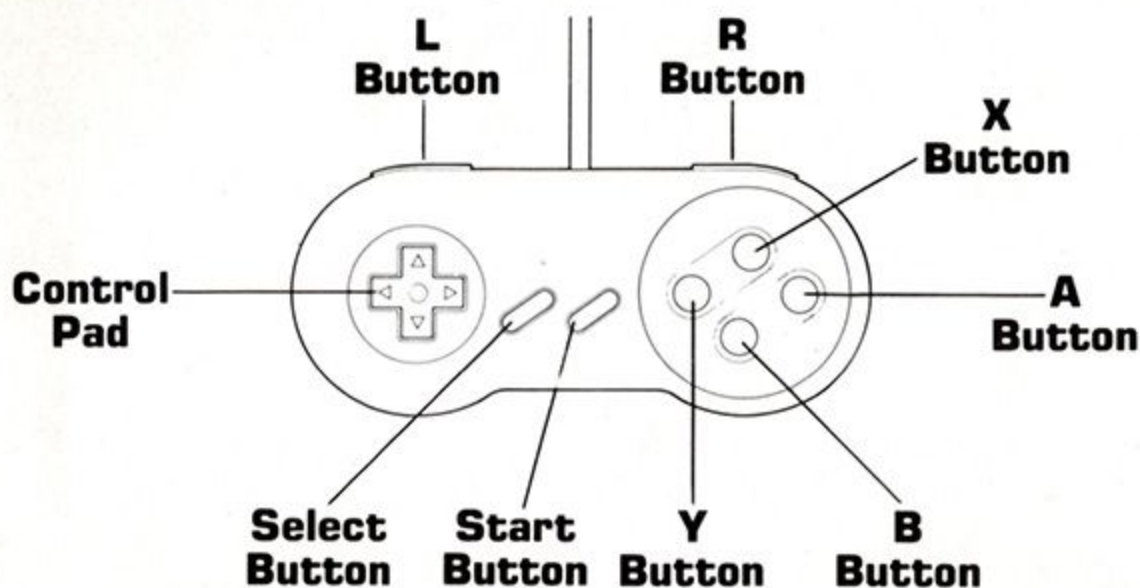


TEAR UP THE ROAD!

Grab the wheel and hit the gas! Based on the #1 arcade game, Super Off-Road is all-out, dirt-grinding, high-gear competition. Watch out for the mud holes, jumps and other obstacles on 16 different stadium tracks and 64 configurations. Trade in cash prizes for racetruck accessories at the Speed Shop and improve your chances for victory. From match-offs to spin-outs, Super Off-Road is as close to genuine short-course racing as you can get!



USING THE CONTROLLER



Control Pad: Press the Control Pad left and right to rotate your racetruck counterclockwise and clockwise.

(**Note:** When your truck is against a wall, you can only turn your truck in the direction away from the wall. You cannot turn your truck into a wall.)

L and R Buttons: Pressing the L and R Buttons independently will give you fine control of your race truck's angle.

Pressing the L and R Buttons while pressing the Control Pad left and right will give your racetruck a greater turning speed.

B Button: Press the B Button to accelerate your racetruck.

Y Button: Press the Y Button to inject nitro fuel (if you have any available).

Start Button: During the title sequence, press the Start Button on either controller to begin playing.

While playing, press the Start Button to pause the game. Press it again to return to the action.

THE SCOREBOARD

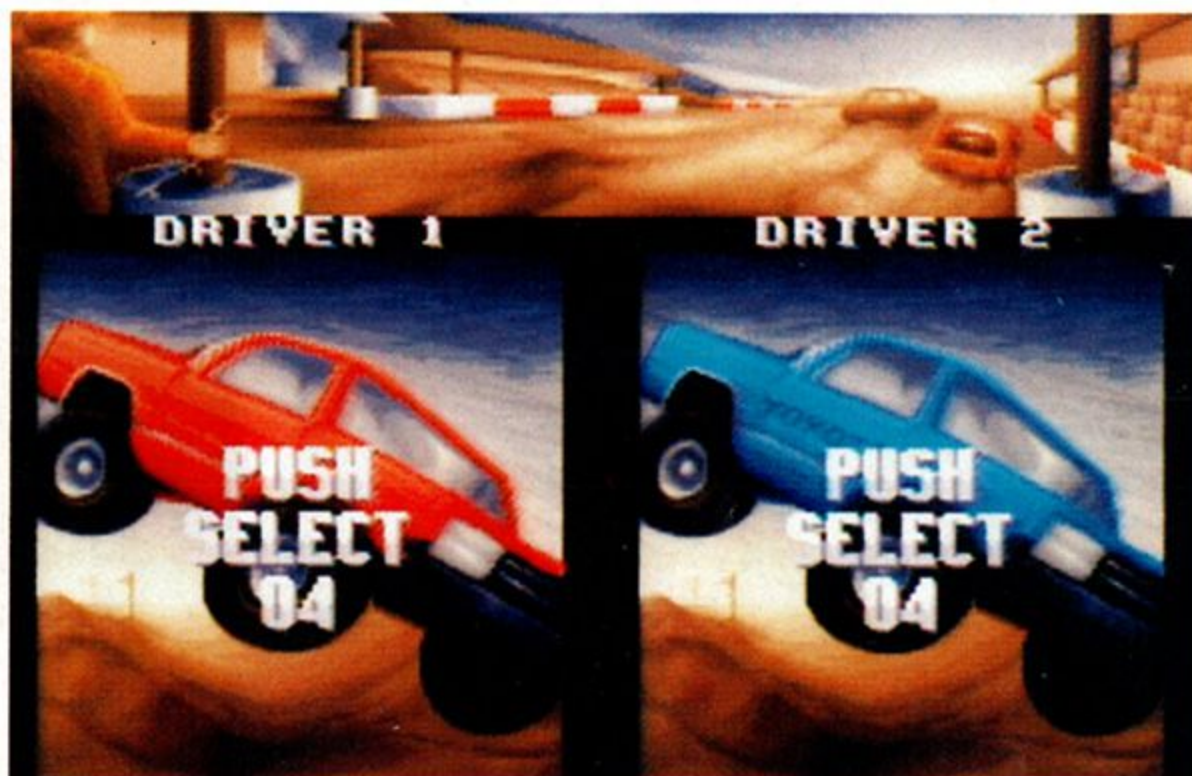
- ① The amount of time elapsed in the current race.
- ② The current lap number and the amount of nitro fuel left for Player 1.
- ③ The current lap number and the amount of nitro fuel left for Player 2.



GETTING READY TO RACE

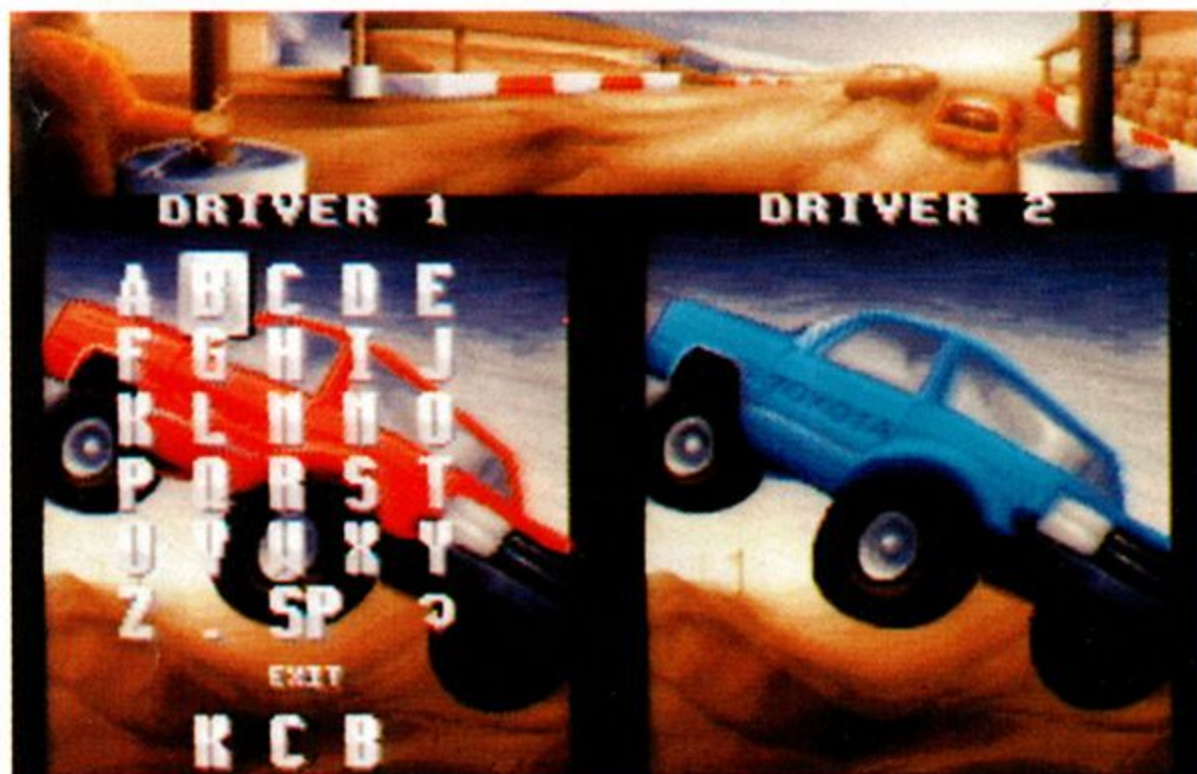
When the title sequence appears, you can press the Start Button to begin playing, or wait a few seconds to watch a demonstration game.

After pressing the Start Button, the 1 Player/2 Player Select screen appears. Press the Select Button on either controller to join in the game.



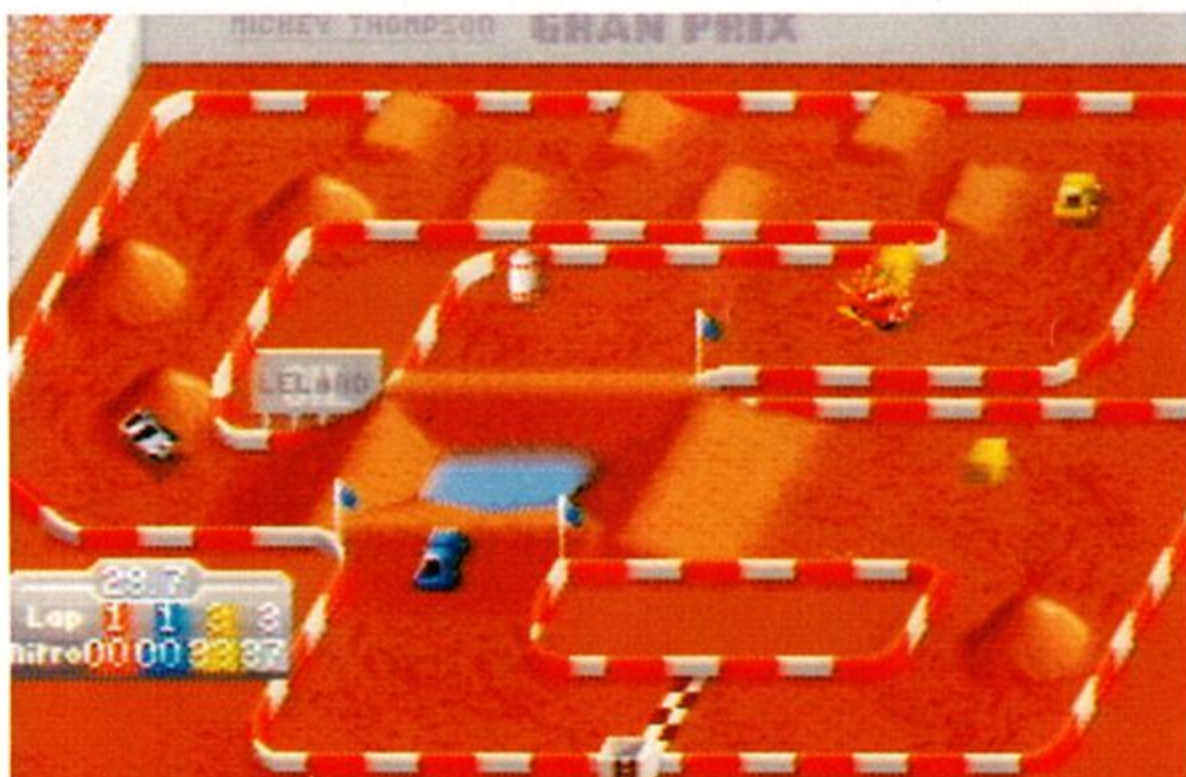
Name Input Screen

Pressing the Select Button brings you to the Name Input screen. To enter your name, press the Control Pad up, down, left and right to position the box over the desired letter, then press the B Button to select the letter. (Pressing the B Button on the backwards arrow will remove the last letter you chose.) To leave the Name Input screen, select the Exit option. This will bring you to the Speed Shop (see page 10).



The Race Begins

After exiting the Speed Shop, the race begins! Be prepared for anything. The tracks and configurations appear in a specific order. Each track is used in both clockwise and counterclockwise directions, as indicated by the starting position. There will always be 4 race-trucks on the track; any racetruck not being driven by a player will Auto-Race. The race ends when one of the players completes 4 laps and crosses the finish line. This player is the winner.



The Winner's Circle

Once any new records have been updated, pressing any key will exit the Winner's Circle. Otherwise, it will move on automatically after a fixed time.



If a player didn't finish in one of the top 3 positions, the "Wipeout!" screen will appear.

If any Continues are available, at the bottom of the screen it will say "Continue?". Press the Control Pad to indicate YES or NO, then press the B button. If you select YES, you will be back in the game, but some of the accessories you have bought for your truck and all your money will be taken away, being replaced by \$100,000. If you select NO, you'll be out of the game.

1 extra Continue is awarded for every 8 tracks a player completes, up to 3 Continues. If more than one player is in the game, Continues will always be available.

WINNING PRIZE MONEY

You begin each game with \$100,000. There are 2 ways to win prize money: Track Bonuses and Final Position.

Track Bonuses

To win extra money, try to hit the bonus targets on the track with your racetruck. Bonuses range from \$10,000 to \$40,000.

Nitro canisters can also be collected, starting as 1 extra and increasing up to 4 extra.

Final Position

You will also receive winnings for your racetruck's position at the end of the race, in these amounts:

1st Place — \$150,000

2nd Place — \$100,000

3rd Place — \$50,000

THE SPEED SHOP

At the Speed Shop, you can purchase accessories with your winnings in order to tune-up your racetruck.

The Speed Shop menu displays your accumulated money, the 5 accessories, and the next track. Press the Control Pad up, down, left and right to position the box over the item you would like to buy, then press the B Button to buy it (if you have enough money).

To return to the game, choose the Start Next Race option.



Accessories

There are 5 accessories you can buy for your racetruck:

Nitro Fuel Units — \$10,000 each (up to 99)

Tires — \$40,000 each (up to 6)

Shocks — \$60,000 each (up to 6)

Acceleration — \$80,000 each (up to 6)

Top Speed — \$100,000 each (up to 6)

Nitro Fuel gives you an extra boost of speed over your normal top speed.

By buying better **Tires**, you can increase your grip on the track and decrease the amount of skid.

By buying more **Shocks**, you can cause your racetruck to bounce less, allowing you to take tighter corners at higher speeds.

The **Acceleration** accessory will enable your racetruck to reach its top speed more quickly.

The **Top Speed** accessory will noticeably increase the normal driving speed of your racetruck.

HOT TIPS

- Avoid puddles and mud holes! They can slow down your racetruck, and even cause a crash.
- If you use your nitro boosts correctly, you can multiply your speed by as much as 3 times. Be sure to save as many nitros as possible for the Crazy Last Lap Dash.



LIMITED WARRANTY

Tradewest, Inc. warrants to the original purchaser of this Tradewest software product that the medium on which this computer program is recorded is free from defects in materials and workmanship for a period of ninety (90) days from the date of purchase. This Tradewest software program is sold "as is," without express or implied warranty of any kind, and Tradewest is not liable for any losses or damages of any kind resulting from use of this program. Tradewest agrees for a period of ninety (90) days to either repair or replace, at its option, free of charge, any Tradewest software product, postage paid, with proof of purchase, at its Factory Service Center.

This warranty is not applicable to normal wear and tear. This warranty shall not be applicable and shall be void if the defect in the Tradewest software product has arisen through abuse, unreasonable use, mistreatment or neglect. THIS WARRANTY IS IN LIEU OF ALL OTHER WARRANTIES AND NO OTHER REPRESENTATIONS OR CLAIMS OF ANY NATURE SHALL BE BINDING ON OR OBLIGATE TRADEWEST. ANY IMPLIED WARRANTIES APPLICABLE TO THIS SOFTWARE PRODUCT, INCLUDING WARRANTIES OF MERCHANTABILITY AND FITNESS FOR A PARTICULAR PURPOSE, ARE LIMITED TO THE NINETY (90) DAY PERIOD DESCRIBED ABOVE. IN NO EVENT WILL TRADEWEST BE LIABLE FOR ANY SPECIAL, INCIDENTAL, OR CONSEQUENTIAL DAMAGES RESULTING FROM POSSESSION, USE OR MALFUNCTION OF THIS TRADEWEST SOFTWARE PRODUCT.

Some states do not allow limitations as to how long an implied warranty lasts and/or exclusions or limitations of incidental or consequential damages so the above limitations and/or exclusions of liability may not apply to you. This warranty gives you specific rights, and you may also have other rights which vary from state to state.

Tradewest, Inc. 2400 South Highway 75, Corsicana, TX 75110. (903) 874-2683.



TRADEWEST

Tradewest, Inc. 2400 South Highway 75, Corsicana, Texas 75110

SUPER OFF-ROAD © 1991 TRADEWEST, INC.
LICENSED TO TRADEWEST, INC. BY THE LELAND CORPORATION, ONE OF
THE WORLD'S LEADING U.S.-BASED COIN-OPERATED GAMES MANUFACTURERS.

PRINTED IN JAPAN.